

●●● Model Course 5 ●●●

Crossing Onoyama-toge Pass from Yamanakadani (Kumano Kodo)

[Katsuragi Sutra Mound #4 (Sakura Jizo Shingehon)]

Tracing the Kii Route, part of the Kumano Kodo, an ancient pilgrimage route to Kumano Sanzan, and enjoying the historic sites and sacred paths of Katsuragi Shugen

The fourth sutra mound also known as the Sakura Jizo, is located a little off the Kii Route, part of the sacred paths of the Kumano Kodo. The actual trail used for the ascetic training is too severe for hiking, so instead we follow the ancient path that crosses Onoyama-toge Pass.

Head north from Yamanakadani Station. Stroll through Yamanaka-shuku and enjoy the atmosphere of this old post town. Points of interest include the former site of its honjin, the official inn used by traveling feudal lords, and the Umameoji-sha Shrine, one of the Kumano Kujuku-oji shrines. Return to the station and follow the main road south. To reach the fourth sutra mound, take the road that branches off to the left. The sutra mound is located a short distance up the slope of the mountain. The village of Sakaidani is just beyond it, so you can stop by if you are interested.

Return to the main road and head further south. Follow the Kumano Kodo signpost across the railroad crossing. Walk past the site of the Nakayama-oji Shrine where *hide* (wooden plaques that serve as proof of a visit) are stored and enter the settlement of Takihata. Proceeding deeper into the settlement, you will find the Kasuga-jinja Shrine and Otonashino-taki Falls, an ascetic training site. Return to the main road again and walk the gently sloping route toward Onoyama-toge Pass. There are no historical sites related to Katsuragi Shugen beyond this point. However, you can find a Sai-no-kami, a stone representing the guardian deity of travelers. Just past the top of Onoyama-toge Pass, you can find its Fuduson mini shrine, where *hide* plaques have been placed. Descend the pass and go through the tunnel under the JR railroad. You will eventually come upon the site of the Yamaguchi-oji Shrine.

Turn right at the corner of the cemetery. Then turn left in front of the torii gate of the Yamaguchi-jinja Shrine before turning right onto Prefectural Road 7. If you continue on, you will soon reach Kii Station, but instead turn into the alley that goes south in front of the mini shrine containing Jizo statues and stop at the site of the Kawabe-oji shrine.

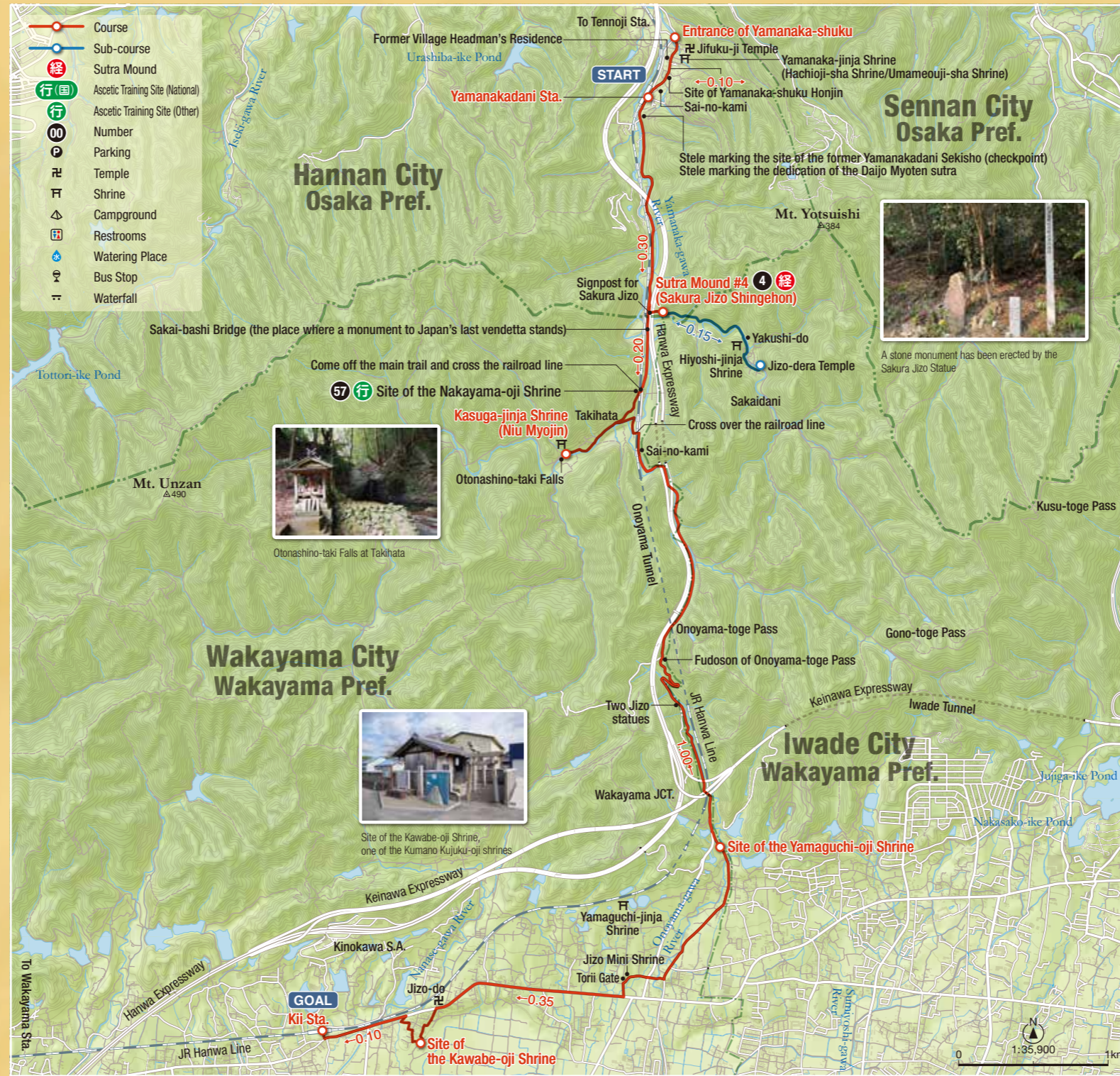
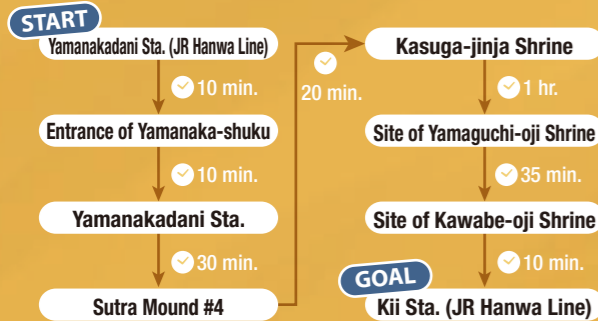
Walking Distance ◆ Approx. 13 km

Fitness Level ★★☆☆

Walking Time ◆ 2 hours 55 minutes

Skill Level ★★☆☆

Course Times



Course Information

Yamanaka-shuku retains the atmosphere of an old post town

Peaceful scenery on the way to Kasuga-jinja Shrine (dedicated to the Niu Myojin)

Site of the Nakayama-oji Shrine at the entrance to the settlement of Takihata

Crossing Onoyama-toge Pass into Wakayama City

Access

Outward Trip

Yamanakadani Sta. (JR Hanwa Line)

Return Trip

Kii Sta. (JR Hanwa Line)

Advice

The entire course is walking on pavement, so sneakers may be best. The main road over Onoyama-toge Pass has no sidewalks, so be careful of traffic. The route becomes somewhat more complicated as it descends into the city on the Wakayama side. However, there are many Kumano Kodo signposts all the way to the site of the Kawabe-oji Shrine.

*Walking distance is the horizontal distance. Course times are reference times for walking at a typical pace, not including rests.

*This course does not exactly follow the training paths used by mountain ascetics.